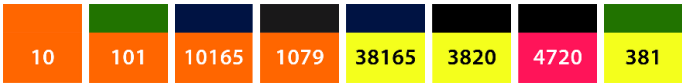
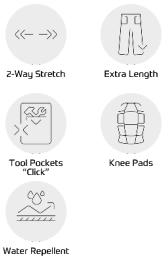
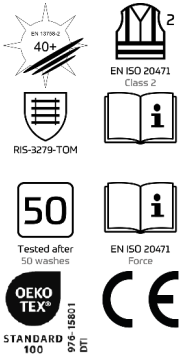


# Safety bib overall

CORDURA FABRIC REPREVE



**Størrelse:**  
**Shell fabric:** 56% Polyester (recycled) / 34% Elastomultiester / 10% Cotton, 285 g/m²  
**Vask:**



Stretchable and functional fluorescent overall with a modern cut. Optimal fit with an ergonomically shaped knees. The stretchable fabric provides optimum movement and comfort. High back and rib panels in the sides for optimal fit and comfort. Adjustable straps. Chest pocket with zip and inside pocket with zip. Two back pockets. Two thigh pockets with zip closure. The left thigh pocket has an extra phone pocket. The right thigh pocket has an reinforced ruler pocket with sections. D-ring hidden in the chest pocket for attaching e.g. an ID card. Reinforced knee/knee pockets made in CORDURA® material with Velcro closure at the bottom. The trousers have an extra deep hem so the length of the trousers can be increased if required. A single seam is extended to provide extra leg length, while the seam stays sealed. Class 2. Tested after 50 machine washes.

- Modern fit
- Stretch
- Excellent comfort and movement
- Many functional pockets, e.g. thigh pockets with zip
- High back and rib panels in the sides
- D-ring in bib pocket
- Buttons for quick and easy fitting of hanging tool pockets (9360-316)
- Knee pockets with CORDURA® and Velcro closure
- Extra wide shortening means the trouser length can easily be extended by 6 cm (4 cm for short inseam length)
- Class 2 clothing
- Number of recycled bottles: 27

